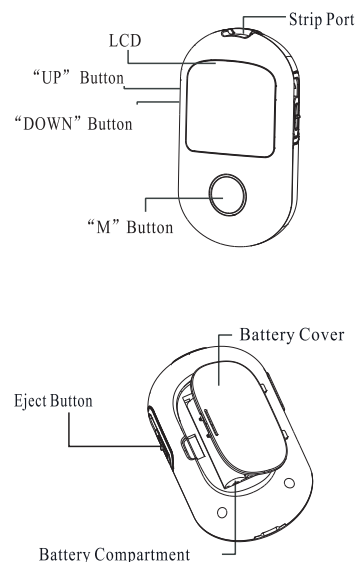


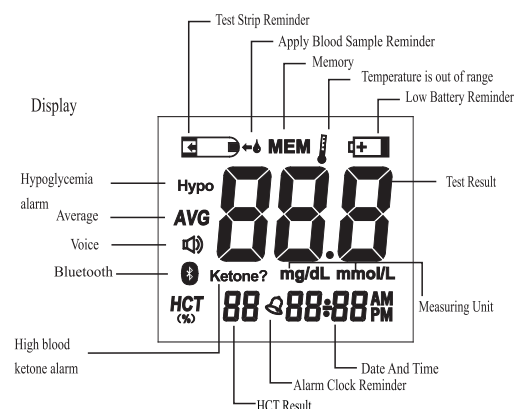
70mm

110mm

Blood Glucose Monitoring System Blood Glucose Meter



Blood Glucose Monitoring System LCD Screen



Blood Glucose Monitoring System Test Strip



Note:

- Store test strips at room temperature between (1°C ~ 30°C). (33.8°F ~ 86°F).
- Do not refrigerate or freeze test strip. Avoid extreme temperature or exposure to sunshine.
- Use test strips before expiry date.
- Immediately use the test strip after it removed out from vial or single-bag.
- Do not reuse test strips.

Blood Glucose Monitoring System Bluetooth

Bluetooth requirements

The Glucose Meter requires a bluetooth device with:

- Bluetooth 4.0 or later
- Android 6.0 or later
- IOS 10.0 or later

And works with:

- iPhone, iPad
- Android Phones and Tablets

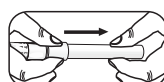
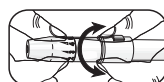
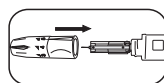
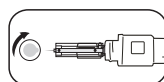
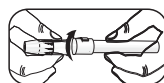
Using for the first time

- ① Download the "GlucoJoy" App from Google Play or Apple Store.
- ② Open the App on your phone or tablet. If requested, you should enable Bluetooth on your device. You can enable Bluetooth under the Setting menu on your smart phone or tablet.
- ③ Create a new user login, or login with your existing user name and password.

When your Glucose Meter is connected successfully to your smart device the "B" symbol stop flashing and keep showing. Refer to the quick guide for the GlucoJoy App for more information.

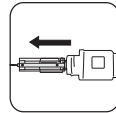
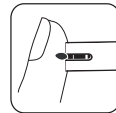
Blood Glucose Monitoring System Preparing the Lancing Device

- 1) Turn the cap anti-clockwise to remove it. Insert a new sterilized lancet into the lancet holder and push it down firmly until it stops.
- 2) Twist off the protective disk until it separates from the lancet.
- 3) Slide the cap on until it stops (Avoid contact with the lancet pin).
- 4) Adjust puncture depth by turning the depth adjusting knob. The indication marks different levels of skin penetration. The higher of the number, the deeper of penetration.
- 5) After slide the ejection spring controller back until it clicks. The lancing device is ready to use.



Blood Glucose Monitoring System Testing your Blood Glucose

- 1) Wash your hands and the puncture site with an alcohol swab or soapy water. Rinse and dry thoroughly.
- 2) Insert a test strip, contact bar end first and facing up, into strip port, and push it in until stops. The meter will automatically turn on and shortly display symbols on screen.
- 3) When you see Apply Blood Sample Reminder symbol flashing, hold the lancing device firmly against the side of your fingertip. Press the Release Button. Gently squeeze your finger to assist the blood flow.
- 4) Touch the blood drop to the top edge of test strip. Hold until the confirmation window is full. The meter begins testing with display countdown.
- 5) At the end of the countdown, The screen will display test result.
- 6) Remove the used test strip. The meter will store the test result and automatically turn off.
- 7) Put the protective disk back on the lancet. Discard it properly.



Blood Glucose Monitoring System Troubleshooting

Message	Possible Cause	What to do
E-1	The system check may be failed	Remove the battery and reinsert it after 30 seconds. If it still doesn't work, please contact the vendor.
E-2	The test strip may be used or damaged.	Retest with a new strip.
E-3	The sample was applied before the meter was ready.	Repeat with a new strip. Applying blood after the "B" symbol flashes on the screen.
E-4	The test strip may be moved during testing or sampling data is unstable.	Retest with a new strip. Make sure that the method of applying sample is correct, and test strip can not be moved during testing.
E-5	The strip check has problem.	Retest with a new strip.
Battery icon	Battery power is low.	Replace the battery soon
Temperature icon	The meter is out of operating temperature range.	Place the system in appropriate operating environment for 30 minutes before retesting.

Blood Glucose Monitoring System Quick Start



MODEL: BG-710b